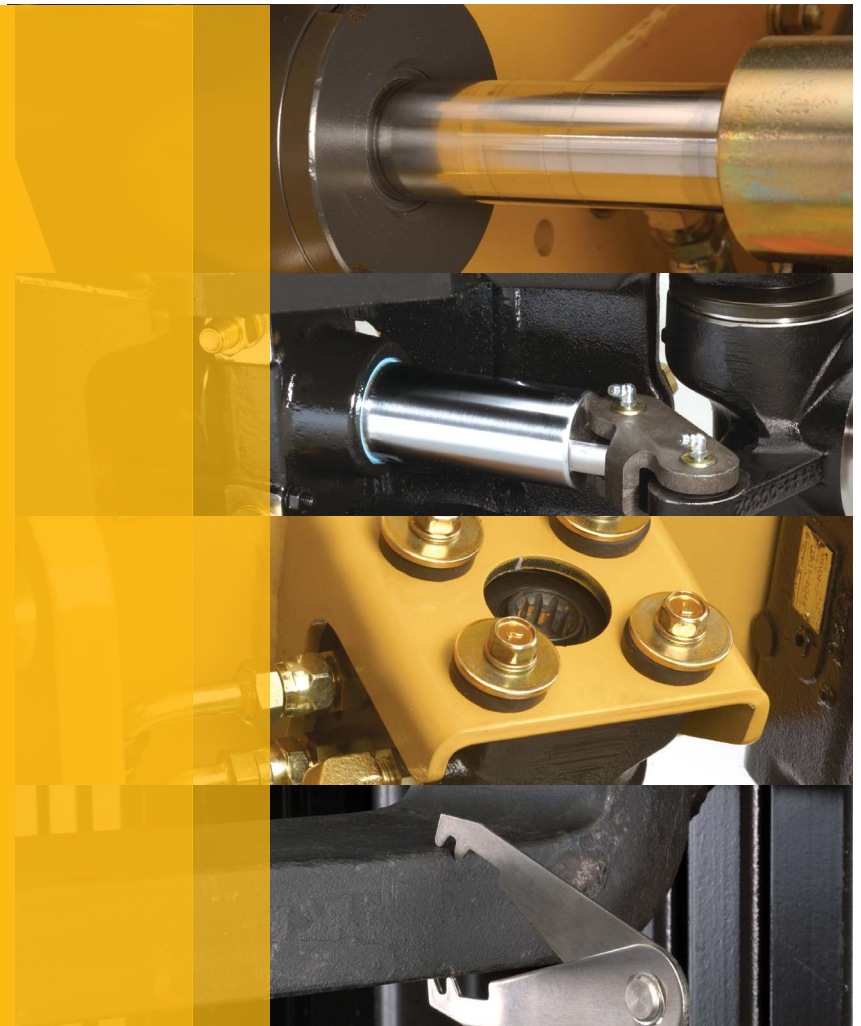


VITAL SIGNSSM FRONT END SYSTEM

Many lift trucks encounter harsh environmental conditions — such as extreme temperature changes and prolonged exposure to chemicals — shift after shift, day after day. This can accelerate the maintenance needs of your lift truck's front end and can hinder its safe operation. As a result, individual front end system components should be inspected on a regular basis to help minimize downtime and product damage. Some environments or applications may require optional equipment. Ask your Cat® lift truck dealer for details.



1471 Jersey Avenue | North Brunswick, NJ 08902
P: 732.220.0444 | F: 732.220.0440 | tri-liftnj.com/service

click below to



REQUEST SERVICE



CONTACT US

- Forks
- Tilt Cylinders
- Mast Lift Chains
- Hydraulic Hoses
- Crosshead Roller Bearing
- Lift Cylinder
- Mast Channels and Weldments

A system is only as strong as its weakest link.

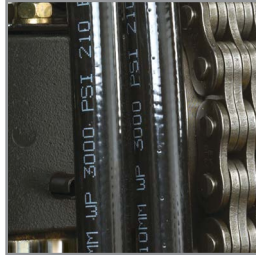
Parts from original equipment manufacturers pass a variety of tests to uphold the warranty protection of your investment. Genuine Cat lift truck parts match our equipment specifications and help provide reliable performance.

Cat lift truck dealers make significant investments in professionally trained service technicians, state-of-the-art diagnostic tools, completely stocked service vans and excellent parts inventory to help keep your lift trucks on the job.



FORKS

Worn or cracked forks must be taken out of service. If heel thickness is reduced to 90% of original thickness, the lift truck should not return to service. For more information, please refer to ASME B56.1 of the American Society of Mechanical Engineers Safety Standards for Low Lift and High Lift Trucks.



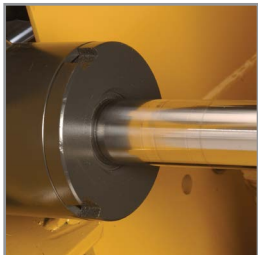
HYDRAULIC HOSES

Damaged hoses and tubes will result in oil leakage in operating environment. Low fluid levels can damage hydraulic components.



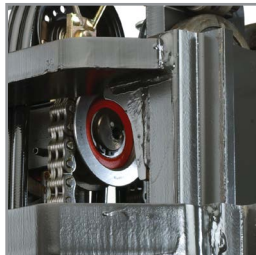
MAST CHANNELS AND WELDMENTS

Mast cracks normally progress and could result in failure of channel. Excessive mast channel gouging is normally the result of improper carriage roller adjustment or failed bearing.



TILT CYLINDERS

Tilt cylinder oil leakage could cause uncontrolled mast movement. Leaks can occur externally or internally within cylinder. Both can cause cylinder drift and loss of fluid control.



CROSSHEAD ROLLER BEARING

Damaged crosshead chain sheaves and bearings could result in damage to the chain. Damaged side thrust carriage rollers may cause damage to the mast channel.



MAST LIFT CHAINS

Chain wear at pin-to-link connections could result in the chain failing. This can damage product and/or front end components.



LIFT CYLINDERS

Lift cylinder oil leakage will result in load drift problem. Leaks can occur externally or internally within cylinder. Both can cause cylinder drift and loss of fluid control.



[click below to](#)



REQUEST SERVICE



CONTACT US

Refer to your operation and maintenance manual for daily inspection and scheduled maintenance intervals.

Copyright © 2013. All rights reserved. CAT, CATERPILLAR, their respective logos, "Caterpillar Yellow" and the POWER EDGE trade dress, as well as corporate and product identity used herein, are trademarks of Caterpillar and may not be used without permission. All registered trademarks are the property of their respective owners. Some products may be shown with optional equipment.

