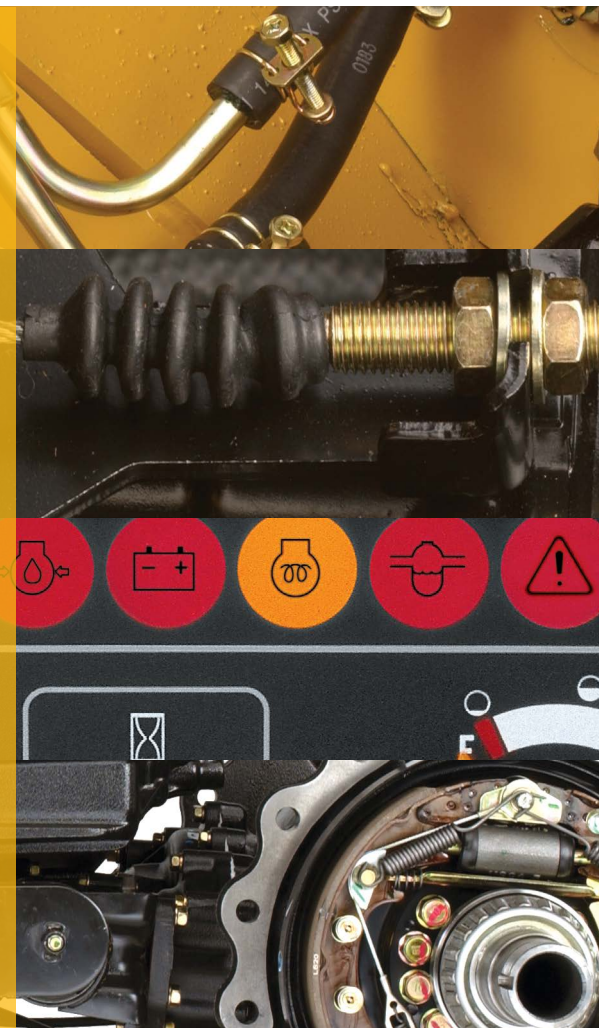


# VITAL SIGNS<sup>SM</sup> TRANSMISSION

Many lift trucks encounter harsh environmental conditions — such as extreme temperature changes and prolonged exposure to chemicals — shift after shift, day after day. This can accelerate the maintenance needs of your transmission and compromise the safe operation of your lift truck. As a result, individual transmission components should be inspected on a regular basis to help minimize downtime and product damage. Some environments or applications may require optional equipment. Ask your Cat® lift truck dealer for details.



1471 Jersey Avenue | North Brunswick, NJ 08902  
P: 732.220.0444 | F: 732.220.0440 | [tri-liftnj.com/service](http://tri-liftnj.com/service)

[click below to](#)



[REQUEST SERVICE](#)



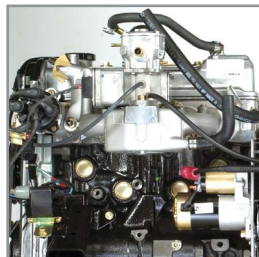
[CONTACT US](#)

- **Transmission Fluid**
- **Inching Pedal Adjustment**
- **Gasket and Seals**
- **Oil Filter and Screens**
- **Oil Cooling Lines**
- **Monitoring System**
- **Cooling Fins**

## A SYSTEM IS ONLY AS STRONG AS ITS WEAKEST LINK

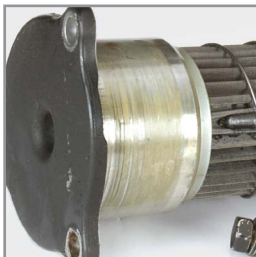
Parts from original equipment manufacturers pass a variety of tests to uphold the warranty protection of your investment. Genuine Cat lift truck parts match our equipment specifications and help provide reliable performance.

Cat lift truck dealers make significant investments in professionally trained service technicians, state-of-the-art diagnostic tools, completely stocked service vans and excellent parts inventory to help keep your lift trucks on the job.



### TRANSMISSION FLUID

Transmission fluid that has not been changed according to maintenance recommendations can lose its lubricating abilities, reducing the service life of transmission components.



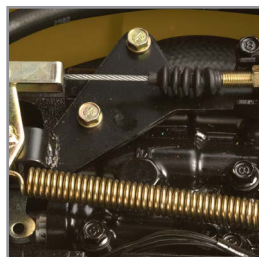
### OIL FILTER AND SCREENS

A clogged filter or screen restricts oil flow, affects truck operation and limits cooling capacity. All can lead to premature component failure.



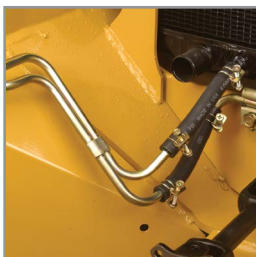
### COOLING FINNS

Transmission cooling fins can accumulate dirt and debris that limit cooling capacity, shorten component life and increase the risk of overheating.



### INCHING PEDAL ADJUSTMENT

Incorrect pedal adjustment can allow continuous plate slippage, resulting in excessive heat buildup and a shorter life of internal components.



### OIL COOLING LINES

Transmission fluid is cooled in the radiator. Poor cooling capacity or leaking cooling lines or hoses can overheat the transmission and accelerate the wear of internal components.



### GASKETS AND SEALS

External leaks from sealed areas can result in premature component wear in addition to causing leaks in the operating environment.



### MONITORING SYSTEM

An inoperative transmission oil temperature gauge or sending unit could result in damage to the transmission components due to an overheating condition that goes unnoticed.



Refer to your operation and maintenance manual for daily inspection and scheduled maintenance intervals.

Copyright © 2013. All rights reserved. CAT, CATERPILLAR, their respective logos, "Caterpillar Yellow" and the POWER EDGE trade dress, as well as corporate and product identity used herein, are trademarks of Caterpillar and may not be used without permission. All registered trademarks are the property of their respective owners. Some products may be shown with optional equipment.



**REQUEST SERVICE**



**CONTACT US**

